



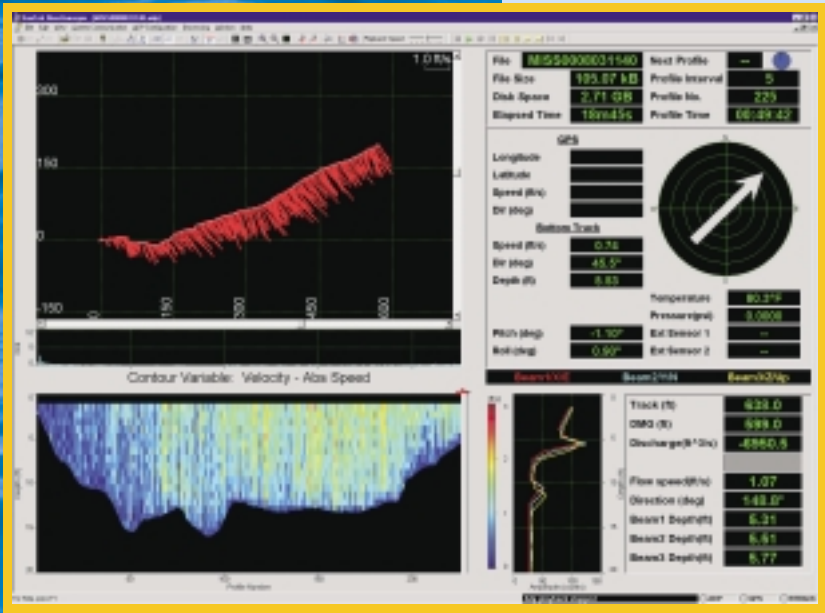
# Shallow Water Discharge Measurement



# RiverCat

SonTek's RiverSurveyor Catamaran (the RiverCat) is a fully integrated river discharge measurement system. As delivered from the factory, it includes the Mini-ADP current profiler, catamaran, radio modems for remote operation, and complete RiverSurveyor software.

## OPTIONS AND FEATURES



- Mini-ADP Mounted in Catamaran
- Radio Telemetry
- Simple Operation (Only One Mode)
- Compact and Lightweight
- Easy Transport and Assembly
- Windows Software
- Shallow Water ( < 0.5 m )
- Optional DGPS
- Factory Integrated



# Performance Specifications

# SonTek

# RiverCat



Rendering showing placement of Mini-ADP head relative to catamaran hulls.



Fully assembled RiverCat easily fits into the back of most work vehicles.

## RIVERCAT SPECIFICATIONS

### Available Frequencies and Operating Depths

Frequency (kHz):	5000	3000	1500
Max Depth (meters):	2.0-2.5	3-6	10-15
Min Depth (meters):	0.25	0.5	0.8

#### RiverCat Features

- Lightweight aluminum catamaran
- Electronics mounted in hull
- Mini-ADP (diameter 10 cm)
- Radio modems
- RiverSurveyor software
- Internal compass/tilt sensor
- Optional integrated DGPS

#### Mini-ADP Features

- Small transducer head
- Separate electronics
- Robust, digital signal processing
- 8 bit A/D conversion

#### Radio Features

- Available in VHF, UHF, 900 MHz, or Spread Spectrum
- Ranges from meters to kilometers

#### RiverSurveyor Software Features

- Windows 95/98/NT compatible
- Bottom tracking
- Real-time discharge calculations

- Discharge estimation options for unmeasured areas
- Discharge summary output file
- Vessel track with velocity vectors
- Bathymetry profile

#### Velocity Data

- Range:  $\pm 10$  m/s
- Resolution: 0.1 cm/s
- Up to 100 range cells

#### Compass/Tilt Sensor

- Resolution: 0.1°
- Accuracy: Heading  $\pm 2^\circ$
- Accuracy: Pitch, Roll  $\pm 1^\circ$

For more information, or to receive news about our complete line of water velocity sensors, **Please Call (858) 546-8327** or Visit Our **Web Site at [www.sontek.com](http://www.sontek.com)**

**SonTek customer support is unsurpassed in the industry. Our experienced and professional staff are ready to assist you with use of the RiverCat for shallow water discharge measurements.**

### CORPORATE HEADQUARTERS

6837 Nancy Ridge Drive, Suite A  
San Diego, CA 92121  
Tel: (858) 546-8327  
Fax: (858) 546-8150  
e-mail: [sales@sontek.com](mailto:sales@sontek.com)  
website: [www.sontek.com](http://www.sontek.com)



The World Leader for Water Velocity Measurement

**MADE IN USA**

© 2000 SonTek  
SonTek & ADP are registered trademarks of SonTek, Inc., San Diego, CA, USA  
Specifications subject to change without notice  
RiverCat v1.1 12/00